



People's Needs Defining Change

HEALTH SERVICES CHANGE GUIDE

www.hse.ie/changeguide

hseland.ie
Cúram le Eolas

eLearning Programme is now live on HSELandD

Delivering Change in Health Services - Complete Guide

People's Needs Defining Change – Health Services Change Guide is the policy framework and agreed approach to change signed off by HSE Leadership and co-sponsored and agreed with the Trade Unions.

This eLearning programme provides practical help to do change well. It takes you through all the elements of the Change Guide and builds your capacity, skills and confidence for delivering change in a complex environment. It can be used at all levels to support managers and staff in health and social care.

How to access the eLearning Programme

Step 1: Register and log in to HSeLandD

<https://www.hseland.ie/dash/Account/Login>

This is available to:

- ✓ Health and social care staff across the HSE
- ✓ Voluntary Health and Social Care Agencies (Section 38s and 39s)
- ✓ 3rd level health & social care students
- ✓ Agency / contract professionals engaged by the HSE, volunteers.

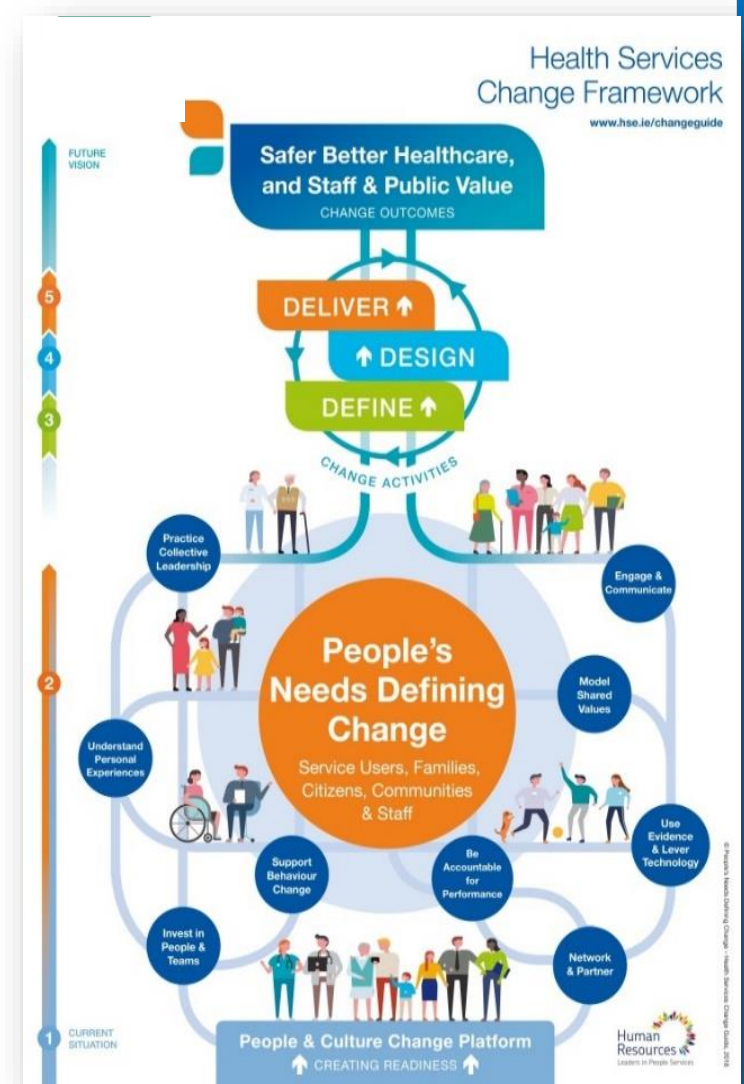
Step 2: Once logged in go to **Course Catalogues** and enter **Delivering Change in Health Services - Complete Guide** in the search bar function.

Step 3: Complete the e-Learning Programme - 4 modules.

Step 4: Following completion of this eLearning Programme, consider the **CPD Certificate (12 points)** from RSCI. Commitment of 12 hours of new learning inclusive of the e-Learning Programme.

Step 5: Visit the **Change & Innovation Hub** on HSeLandD for more resources on change.

<https://www.hse.ie/eng/staff/resources/changeguide/>



“When we involve people, understand their personal experiences, we create meaningful change.”



Organisation Development & Change, Kells, Co Meath.

Email: changeguide@hse.ie Follow us Twitter: [@HSEchange_guide](https://twitter.com/HSEchange_guide)

